

Formal Data Stewardship: Exploring the Challenges Faced

What challenges are data stewards facing, and do they differ between organizations where leaders feel their success has been higher or lower?

Although most have experience some degree of success with data stewardship, others are still too early in their journey to say

Whether successful or not, complex data ecosystems, lack of time for stewardship activities and insufficient tools pose a challenge

Where stewardship is nascent or only somewhat successful, stewards struggle with inconsistency of approach across these roles

Data collection: Feb 1 - Mar 29, 2024

Respondents: 91 IT and data and analytics leaders involved in or responsible for the data governance program at organizations that have formally established one or more data governance stewards

About Gartner Peer Community One-Minute Insights:

Gartner Peer Community is for technology and business leaders to engage in discussions with peers and share knowledge in real time.

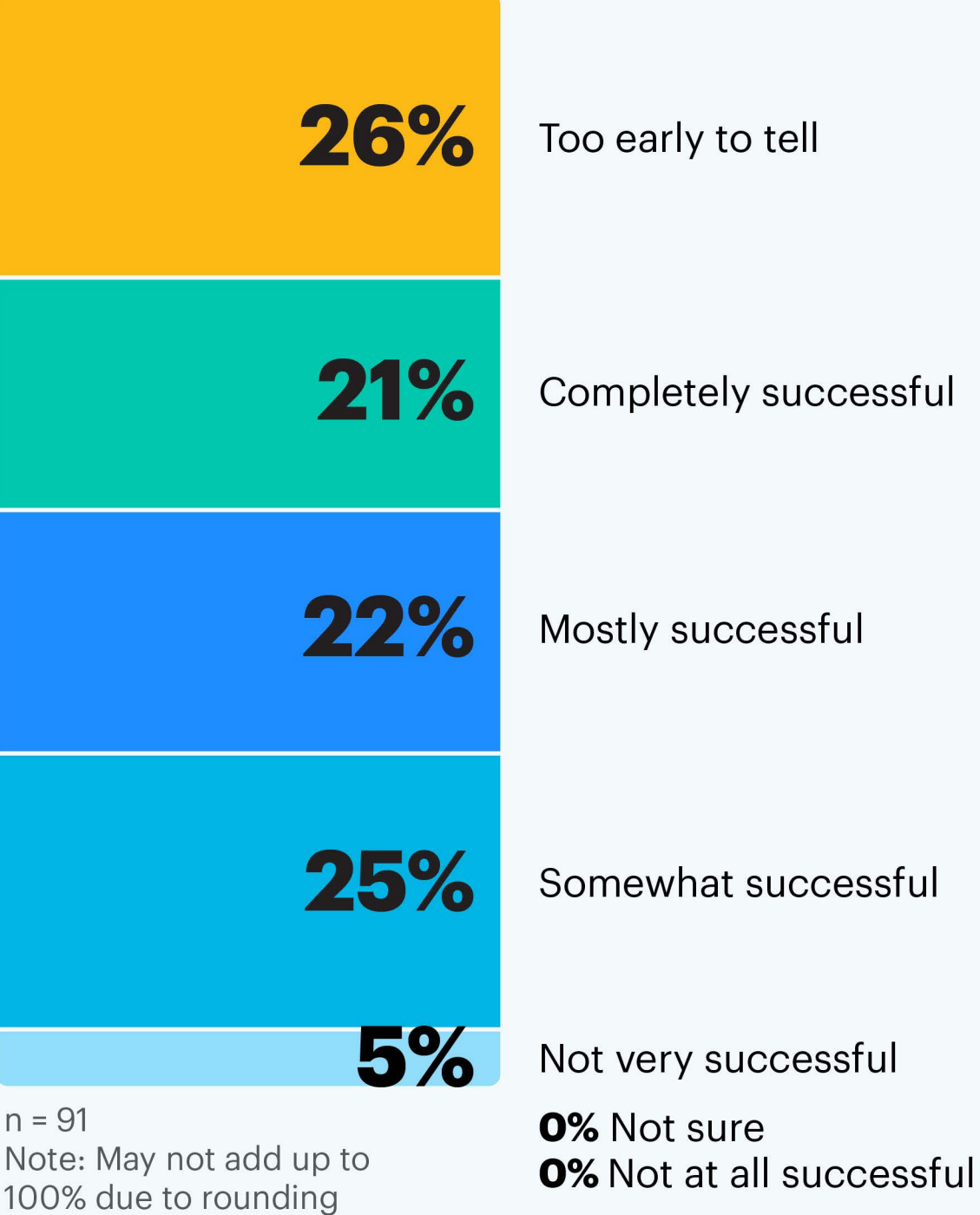
Surveys are designed by Gartner Peer Community editors and appear on the Gartner Peer Community platform. Once the respondent threshold is met, survey results are summarized in a One-Minute Insight.

The results of this summary are representative of the respondents that participated in the survey. It is not market representative.



Most have experienced some degree of success with data governance stewardship

How would you describe the overall success of data governance stewardship at your organization?



While **43%** of respondents say their organization's data governance stewardship has been **mostly or completely successful**, **56%** say it is at most **somewhat successful or too early to tell**.

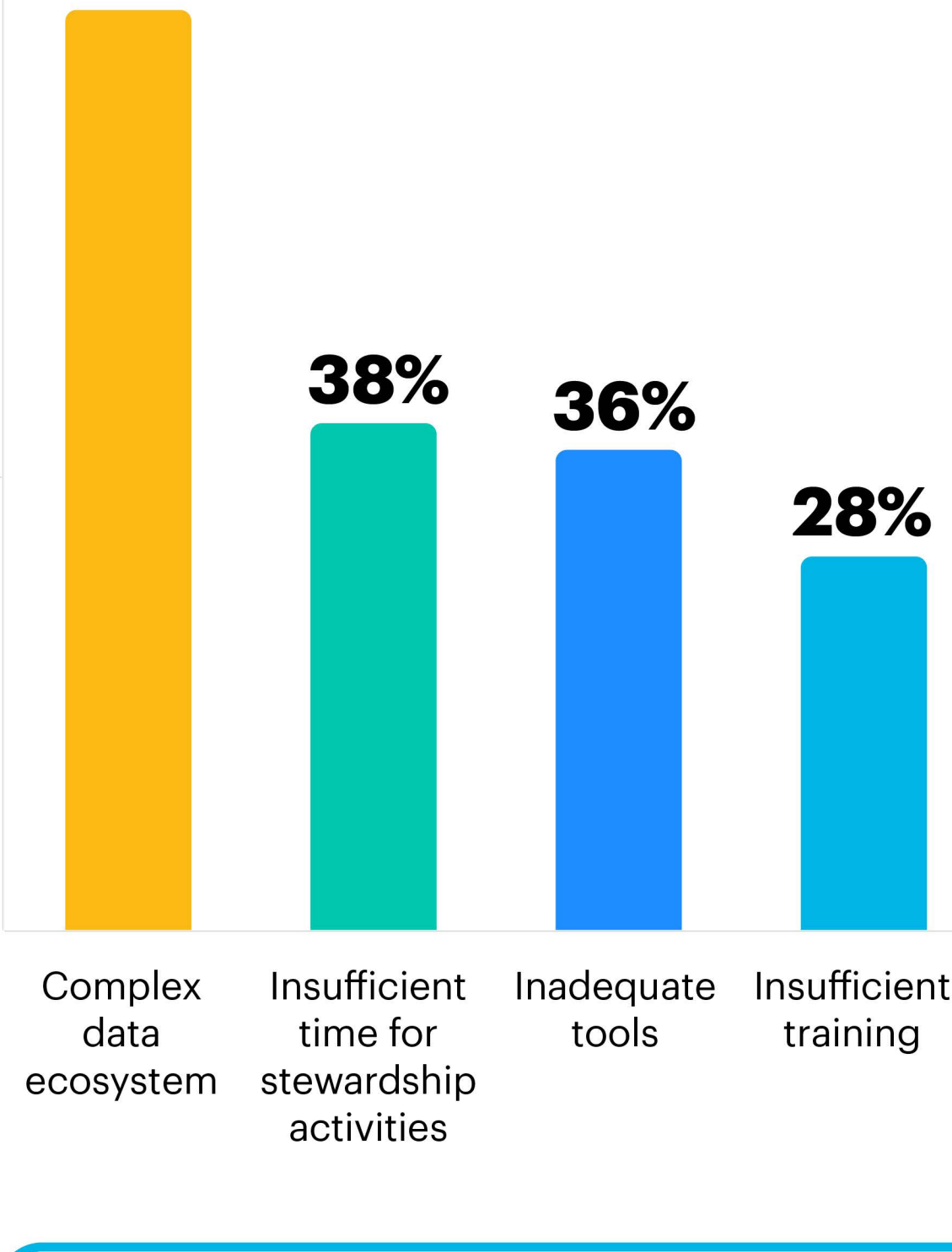
“Data governance is a world unto itself. Organizations need to spend significant time and energy to do this right. But in the current climate, it's imperative.”

C-suite, software industry, 1,000 - 5,000 employees



Question: Do you have any final thoughts to share on data governance stewardship?

At successful organizations, most struggle with a complex data ecosystem



Among those who feel data governance stewardship at their organization is **mostly or completely successful** (n = 39), the **complexity of the data ecosystem** (69%) is the **most common challenge**.

Less than half selected insufficient time for stewardship activities (38%) and inadequate tools (36%).

What challenges are data governance stewards currently facing in fulfilling their stewardship responsibilities within your organization? Select all that apply.¹

Poorly defined responsibilities **23%** |
Overly strict governance policies **21%** |
Inconsistent approach across stewardship roles **18%** |
Poorly defined reporting structure **18%** |
Poorly defined governance policies **13%** |
Lack of support from senior management **8%** | Not sure **0%** | Other **0%**

n = 39

“Data is complex and sensitive in many aspects, however it should not be overly secretive. Except [for] a few areas, data should be widely available for people to extract value from it. The right governance mechanism should be established for such a case.”

VP, software industry, 10,000+ employees



Question: Do you have any final thoughts to share on data governance stewardship?

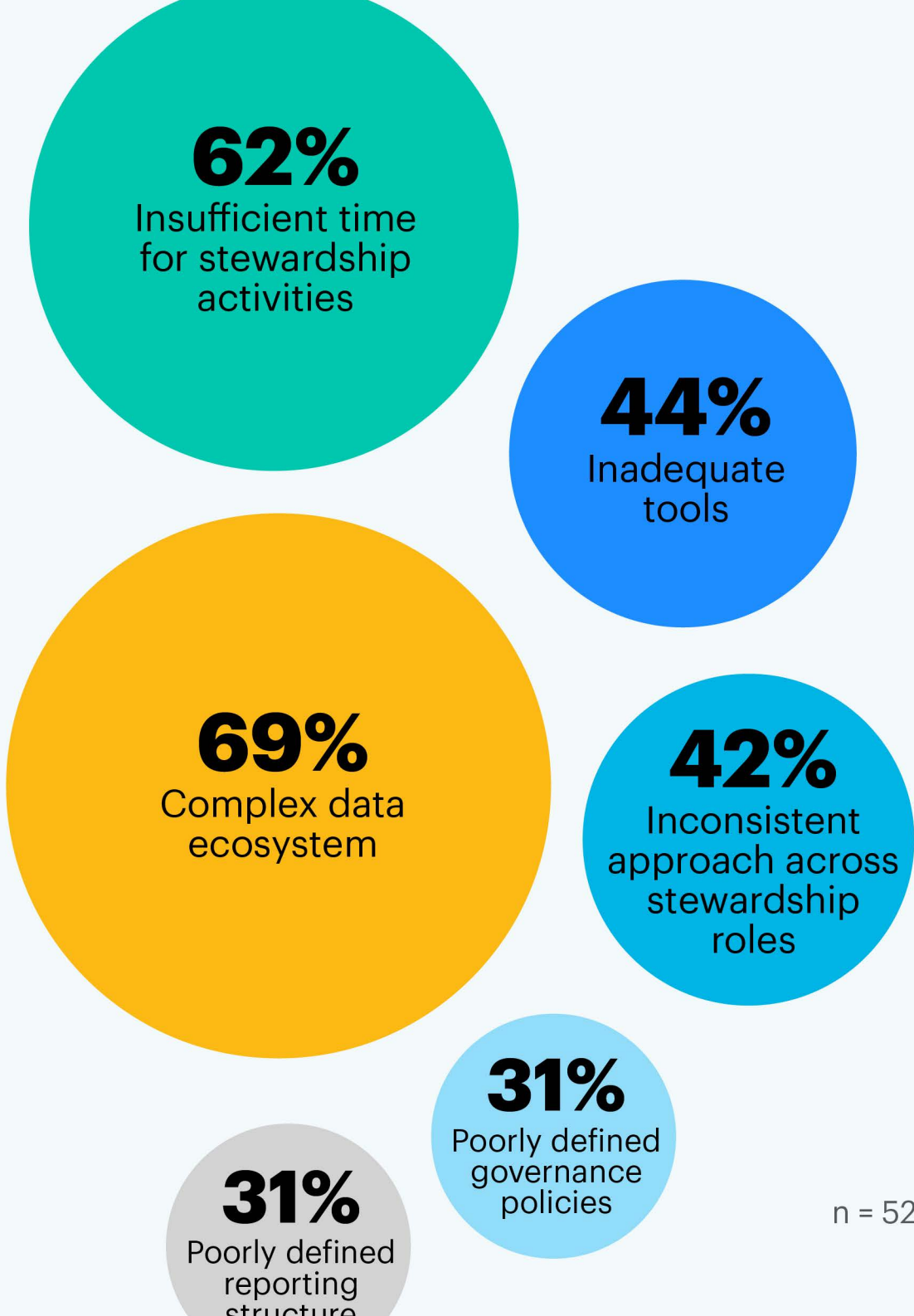
Challenges with consistency and time are common at less successful organizations

More than half (62%) of respondents at organizations with nascent, somewhat successful or not very successful data stewardship (n = 52) struggle with **insufficient time for stewardship activities**. **42%** face issues with an inconsistent approach to stewardship.

What challenges are data governance stewards currently facing in fulfilling their stewardship responsibilities within your organization? Select all that apply.²

Insufficient training **27%** | Poorly defined responsibilities **21%** |
Lack of support from senior management **21%** |
Overly strict governance policies **19%** | Not sure **4%** | Other* **2%**

*Other includes: Lack of control over data input by business users



“Data governance stewardship is a great idea, but given the lack of resources, the responsibility becomes another task on an already overburdened employee.”

Director, educational services industry, 1,000 - 5,000 employees



Question: Do you have any final thoughts to share on data governance stewardship?

In their own words...

“This is a new problem that will only get [more] challenging in the future. We need better tools and process maturity.”

- VP, finance industry, 1,000 - 5,000 employees

“Stewardship is helping [with] data quality but until the business owns data quality and enforces corrective actions, there is only so much improvement the [stewardship] can achieve.”

- Director, software industry, 1,000 - 5,000 employees

“The challenge is usually the data stewards either expecting to be, or acting of their own volition, as data OWNERS, and making decisions that are not theirs to make. Sometimes they take that ownership and are protective of it, but at other times they feel forced into the role.”

- C-suite, software industry, 1,000 - 5,000 employees

Question: Do you have any final thoughts to share on data governance stewardship?

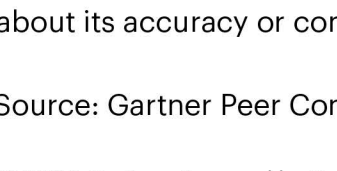


Respondent Breakdown



Want more insights like this from leaders like yourself?

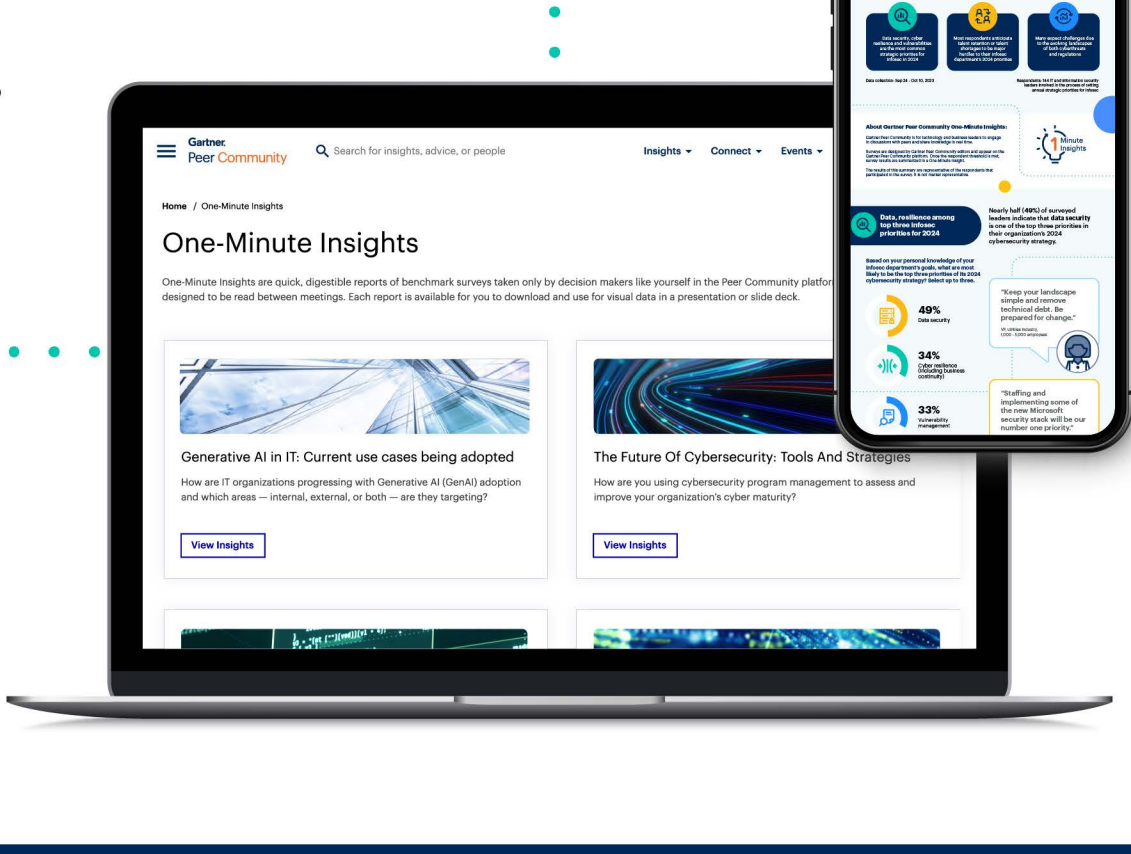
[Click here](#) to explore the revamped, retooled and reimagined Gartner Peer Community. You'll get access to synthesized insights and engaging discussions from a community of your peers.



This content, which provides opinions and points of view expressed by users, does not represent the views of Gartner; Gartner neither endorses it nor makes any warranties about its accuracy or completeness.

Source: Gartner Peer Community, Data Stewardship: Trajectories of Success survey

© 2024 Gartner, Inc. and/or its affiliates. All rights reserved.



¹ Filtered to only show data from respondents who answered “Mostly successful” or “Completely successful” to “How would you describe the overall success of data governance stewardship at your organization?”
² Filtered to only show data from respondents who answered “Somewhat successful,” “Not very successful” or “Too early to tell” to “How would you describe the overall success of data governance stewardship at your organization?”